



Exposé

MAQUIyTEC
Maquinaria y Tecnologías




MARINI

Asphalt Plant 250 t/h



Alicante, 08.09.2021

MAQUIyTEC
Spain - Germany - Peru

 www.MAQUIyTEC.com
 0034 - 666 - 48.88.48
 0049 - 39932 - 19560



Marini Asphalt Plant 250 t/h

Offer number: A-210907-2001-01
 Year of construction: 2001 + different updates
 Brand: Marini
 Model: MARINI 250
 Capacity: ≈ 250 t/h

Technical details:

Plant is continued up dated until 2021

- Chain hot elevator new in 2020
- Dryer inside new in 2020
- and other parts renewed in 2020 and also 2021

Plant is configured by:

- Mixer 4.000 kg
- Screening unit 6 deck
- Electronic direction MIPROTEK 4000i
- RA Feeding in Dryer
- Hot Store 300 t (3 departments)
- Filler 2 x 50 t + 1 x 100 t
- Bitumen Tanks 5 x 60 t vertical
- Heating Central Weishaupt Burner 250 kW
- Cold bins feeders 14 units
- Burner Benninghoven RAX JET K-Oil 3
- Bag Filter Lühr 940 m³

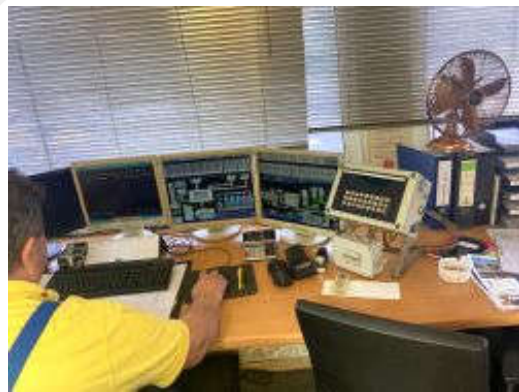
Status:

- Plant is still working and will be available end of this Year 2021 November

Machines in good conditions!
Sales price on request!

Photos:







To see alternative equipment, visit our web site.

<http://www.maquiytec.com/ph/marini-250-2001.htm>

MAQUIYTEC