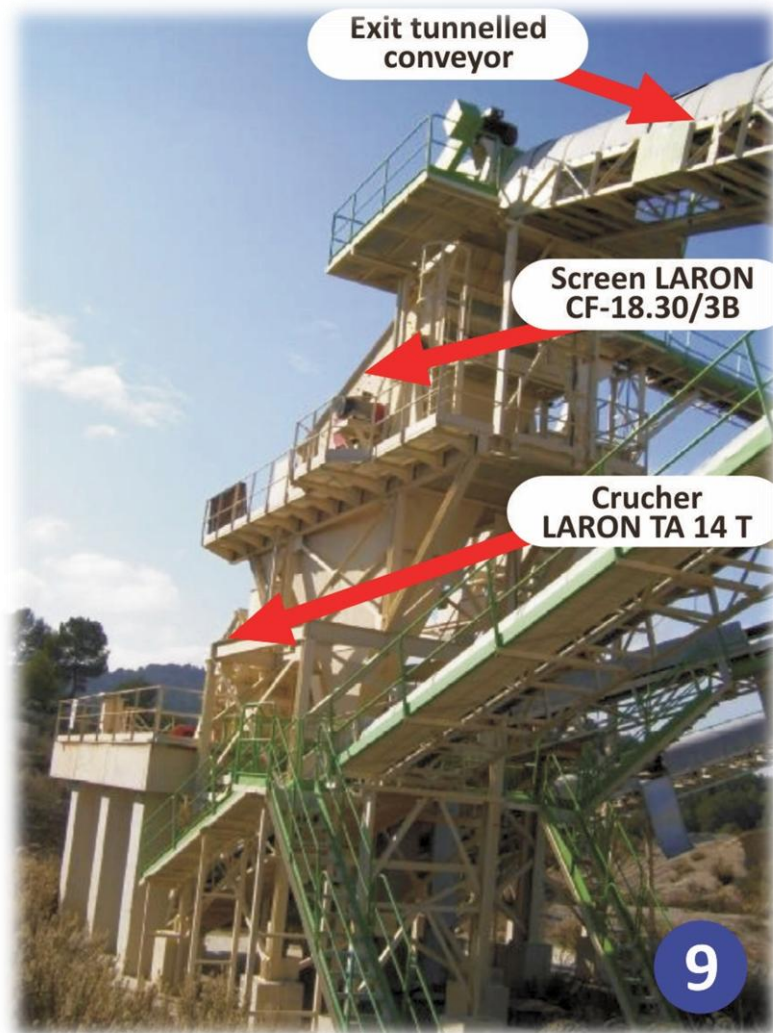


# Complete Crusher Plant LARON



# Complete Crusher Plant

Brand:	Different
Model:	Different
Capacity:	till 800 t/h
Year of construction:	Different

## Build by the Components

The components of the plant are illustrated on the next page of the present document. The numbers in the plan and in the description are in concordance, the same is valid for the photos.

### 1. Steel hopper

### 2. Metal feeder TREICO CAM 1.300 x 6.030 with a 25 HP motor and work ways on both sides and collectors

- Dimensions: 1.300 x 6.030 mm
- Capacity: 300 / 600 t/h
- Supply: 1.500 kg
- Power: 20 kW/ 25 HP
- Weight: 20,5 t

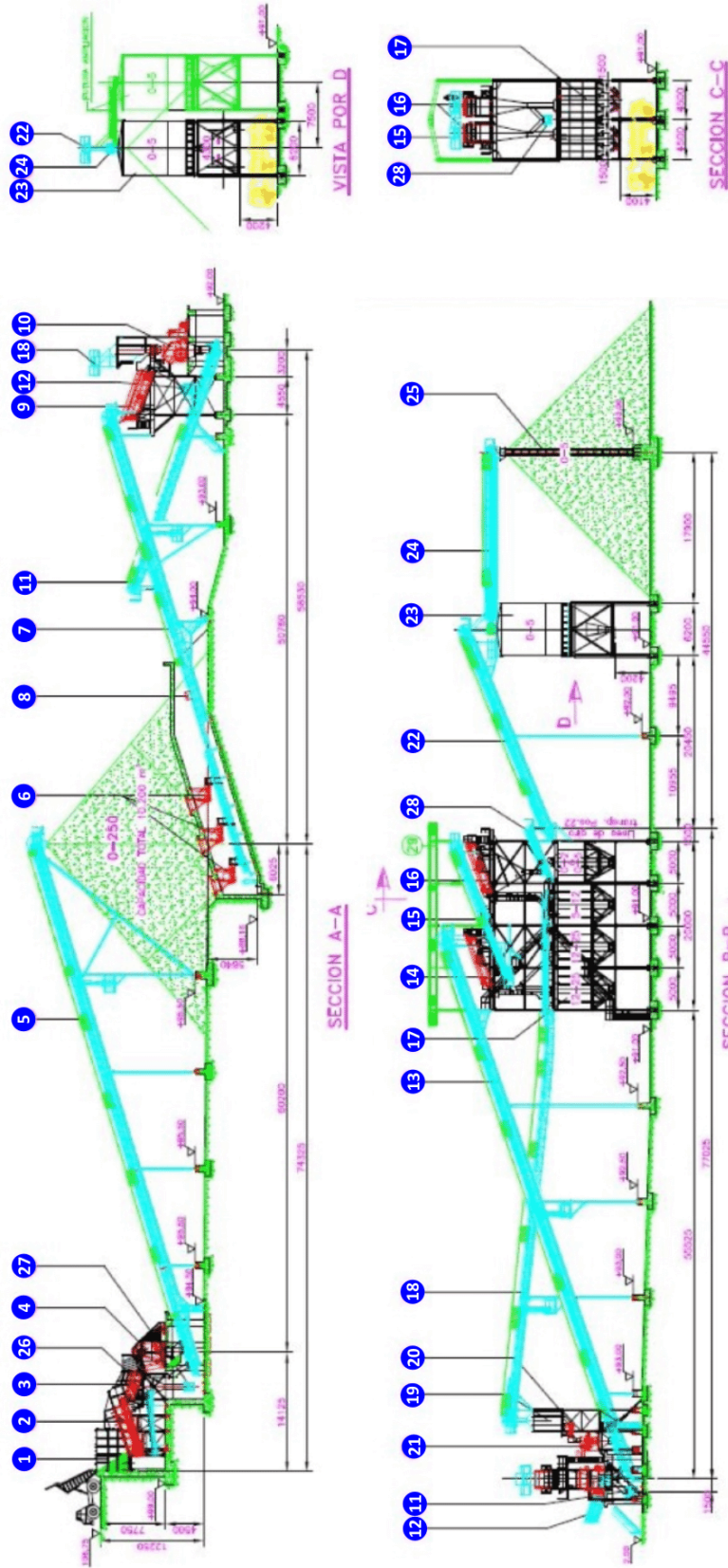
### 3. Vibration pre-screening Grizzly LARON G-15.30/2B, with motor of 20 HP, utilities, metal structure, pickup equipment and gutters

- Dimensions: 1.500 x 3.000 mm
- No. Of tries: 2
- Power: 15 kW/ 20 HP
- Weight: 6 t

### 4. Jaw crusher MS-50 with support construction, motor, gear box, starting motor, hydraulic group, working ways, etc.

- Inlet size: 1.320 x 1.050 mm
- Supply: 1.500 kg
- Capacity: 300 / 600 t/h
- Power: 200 kW/ 270 HP
- Weight: 42 t
- Setting: 140 / 220 mm

# Complete Crusher Plant LAU



Nr.	Machine	Pieces	Observation	Nr.	Machine	Pieces	Observation	Nr.	Machine	Pieces	Observation
1	Steel hopper	1	80 t	11	Conveyor A = 800 mm	1	L=30,5 m Incl. 19°	21	Crusher MAGOTTEAUX	1	Client supply
2	Feeder TREICO CAM	1	1.300 x 6.030	12	Conveyor A = 800 mm	1	L=30 m Incl. 20°	22	Conveyor A = 650 mm	1	L=26 m Incl. 22°
3	Grizzly with 2 trays	1	G-15.30/2B	13	Conveyor A = 1.000 mm	1	L=67 m Incl. 19°	23	Circular Silo, 2,6 x 18 mm	1	Capacity 500 t
4	Law Crusher MS-50	1	MS-50	14	Vibrating screen 2 trays	2	CR 18,60/3B	24	Conveyor A = 650 mm	1	L=20 m Incl. 0°
5	Conveyor A = 1.000 mm	1	L=65 m Incl. 17°	15	Conveyor A = 500 mm	2	L=16,7 m Incl. 22°	25	Chimney for stock 0-5	1	
6	Electromechanical vibration feeder	3	1.100 x 1.500	16	Vibrating screen 2 trays	2	C 15,50/2B	26	Conveyor A = 800 mm	1	L=7 m Incl. 5°
7	Conveyor A = 1200 mm	1	L=55,5 m Incl. 17°	17	Metal silo 100 m³	6	5,0 x 4,5 x 11,0 m	27	Conveyor A = 650 mm	1	L=20 m Incl. 22°
8	Metal Detector A = 1200 mm	1		18	Transporter A = 800 mm	1	L=62,5 m Incl. 0-7°	28	Conveyor A = 650 mm	1	L=5,5 m Incl. 22°
9	Vibrating screen reforzada 3 trays	1	CR 18,60/3B	19	Metal silo 20 m³	1	2,5 x 3,0 x 12,8 m				
10	Secondary crusher LARON	1	TA-14	20	Electromagnetic vibration feeder	1	900 x 1.500				

**5. Conveyor TREICO TCL with 2 electro-motors of 30 HP**

- Length: 65 m
- Band width: 1.000 mm
- Capacity: 450 t/h
- Granulometry: 0 – 250 mm

**6. Tree electromechanical vibration feeder LARON with the dimensions 1.100 x 1.800 including auxiliary equipment**

**7. Conveyor TREICO TUL – TCL with two motors of 40 HP**

- Length: 55,5 m
- Band width: 1.200 mm
- Capacity: 800 t/h
- Granulometry: 0 – 250 mm

**8. Metal detector**

**9. Vibration screening LARON CR-18.60/3B with motor (40 HP) and metallic support structure, pickup equipment and gutters**

- Dimensions: 1.800 x 6.000 mm
- No. Of tries: 3
- Power: 30 kW/ 40 HP
- Weight: 8,8 t

**10. Secondary Impact crusher LARON TA-14T, with motor (430 HP), metal support structure, gear box and starting motor**

- Inlet size: 2.170 x 750 mm
- Capacity: 350 / 450 t/h
- Power: 200 kW/ 270 HP
- Weight: 29,25 t

**11. Return conveyor TREICOL TCL, with motor of 30 HP**

- Length: 30,5 m
- Band width: 800 mm
- Capacity: 400 t/h
- Granulometry: 0 – 40 mm

#### **12. Conveyor TREICOL TTR, with motor of 30 HP**

- Length: 30,5 m
- Band width: 800 mm
- Capacity: 400 t/h
- Granulometry: 0 – 40 mm or 0 – 25 mm according to the used mesh

#### **13. Conveyor TREICOL TCL, from the secondary crusher to the screening zone, with two motors of 40 HP**

- Length: 67 m
- Band width: 1.000 mm
- Capacity: 520 t/h
- Granulometry: 0 – 60 mm

#### **14. Two twin screens LARON C-18.60/2B, with motor of 25 HP, metal structure, pickup equipment and gutters**

- Dimensions: 1.800 x 6.000 mm
- No. Of tries: 2
- Power: 19 kW/ 25 HP
- Weight: 5,5 t

#### **15. Twin conveyor TREICOL TIR, with motors of 20 HP**

- Length: 16,7 m
- Band width: 800 mm
- Capacity: 380 t/h
- Granulometry: 0 – 12 mm

#### **16. Two twin screens LARON C-18.60/2B, with motor of 25 HP, metal structure, pickup equipment and gutters**

- Dimensions: 1.800 x 6.000 mm
- No. Of tries: 2
- Power: 19 kW/ 25 HP
- Weight: 5,5 t

#### **17. Six Metal silos 5,0 x 4,5 x 11,0 with 100 m<sup>3</sup> capacity with electrical installation to open the discharge nozzles**

#### **18. Conveyor TREICOL TCL, with motor of 10 HP**

- Length: 62,6 m
- Band width: 650 mm
- Capacity: 120 t/h
- Granulometry: 5 – 60 mm (Possibility to regrind all grain sizes)

- 19. Metal silo – 2,2 x 2,2 x 11,0 m – with 20 m<sup>3</sup> capacity**
- 20. Electromagnetic vibration feeder LARON 600 x 1.050 with automatic regulation channeler, etc.**
- 21. MAGOTTEAUX MAG IMPACT 2.400, including the metallic structure, two motors – 200 kW, gear box, starting equipment, metal detector and electronically control panel**
- Setting: 130 mm
  - Capacity: 100 / 350 t/h
  - Weight: 15 t

**22. Conveyor TREICOL, with motor of 15 HP**

- Length: 26 m
- Band width: 650 mm
- Capacity: 380 t/h
- Granulometry: 0 – 25 mm

**23. Circular metallic silo of 500 t, 18,8 m high and diameter 6,2 m**

**24. Conveyor TREICOL, with motor of 15 HP**

- Length: 20 m
- Band width: 650 mm
- Capacity: 380 t/h
- Granulometry: 0 – 25 mm

**25. Chimney for stock 0-5**

**26. Conveyor TREICOL TUL, with motor of 4 HP**

- Length: 7 m
- Band width: 800 mm
- Capacity: 80 t/h
- Granulometry: 0 – 20 mm

Belt for the rubbish concentration (not usable stone sizes)

**27. Conveyor TREICOL TTR for rubbish extraction, with motor of 15 HP**

- Length: 20 m
- Band width: 650 mm
- Capacity: 380 t/h
- Granulometry: 0 – 25 mm

**28. Conveyor TREICOL TTR for sand extraction, with motor of 4 HP**

- Length: 5,5 m
- Band width: 650 mm
- Capacity: 80 t/h
- Granulometry: 0 – 20 mm

## Technical status

- The plant was working partially only 2 years
- The total working hours are over 3.000 hours

**Plant is in excellent technical working conditions.**

**Sales Price on request**

## Status:

Ex-work in Spain

## Photos:



